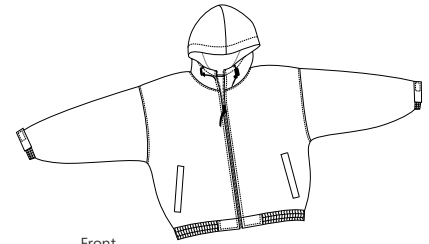
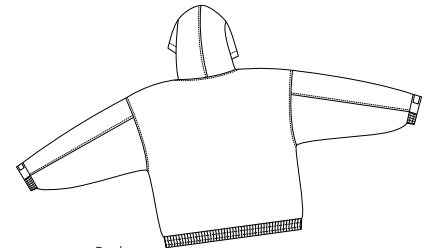


Warm-Up Jacket

PORT AUTHORITY®



Front



Back

J756

- * 100% Taslan Nylon outer shell * Sweatshirt fabric body and hood lining
- * Poly-filled nylon-lined sleeves * Elastic cuffs with adjustable Velcro tabs * Drawstring hood
- * Elastic waistband * Interior and exterior zip close pockets


Care Instructions:
Machine wash cold, gentle cycle.
Tumble dry low. Cool iron if needed. Do not bleach.

Finished Measurements in Inches

Size	XS	S	M	L	XL	2XL	3XL	4XL	5XL	6XL
Length	26	26.5	27	27.5	28.5	29	30	30		
Chest	23	24.5	26	27.5	29	30.5	32	33.5		
Sleeve	32	34	36	36.5	38	38.5	39	39		
Sweep	21.5	23	24.5	25.5	27	28.5	30	31.5		
Areas for Decoration	L/R Chest, Full Back				Port Pocket™			NA		

Chest width measured 1" below arme hole. Length measured from center back neck seam to bottom hem.
Sleeve length measured from center back neck seam to cuff. Sweep measured side to side extended.

Colors

	Black/Light Oxford
	Bright Navy/Light Oxford
	Hunter/Light Oxford
	Maroon/Light Oxford
	Royal/Light Oxford

Please Note:

Colors shown are approximate and for reference only. For closest match see PMS colors, or for exact match, returnable samples and grommeted samples are available.

Color Chart

Colors	Black	Bright Navy	Hunter	Maroon	Royal
Textile PMS	19-4005TC	19-3920TC	19-5212TC	19-1627TC	19-3952TC
General PMS	426C	533C	5467C	504C	661C