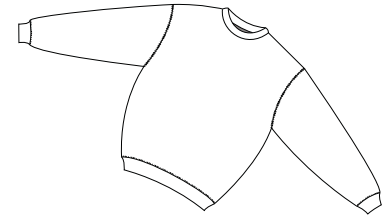
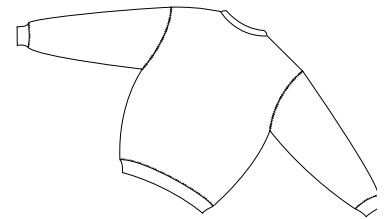


Crewneck Sweatshirt

PORT & COMPANY®



Front



Back

PC90

* 9-ounce 50/50 cotton/poly fleece * Spandex in collar, cuffs, and waistband * Coverseamed neck, armholes, and waistband * Set-in sleeves

Care Instructions:

Machine wash cold, inside out, with like colors. Only non-chlorine bleach when needed. Tumble dry medium. Medium-hot iron. Do not iron decoration.

Finished Measurements in Inches

Size	S	M	L	XL	2XL	3XL	4XL	5XL	6XL
Neck	6.75	6.75	7.25	7.25	7.75	7.75	7.75	8.12	8.12
Width	18	20	22	24	26	28	30	32	34
Length	27	29	30	31	33	34	35	36	37
Sleeve	16	18	19	20.5	22	23.5	25	26.5	28

Neck measured by width. Chest width measured 1" below arm hole.

Body length measured from back neck seam to hem. Sleeve length measured from shoulder seam to hem.

Colors

White	Athletic Maroon
Lights	Brown
Ash**	Cardinal
Daffodil Yellow	Charcoal
Light Blue	Colonial Blue
Lime	Dark Green
Natural	Gold
Orange Sherbet	Kelly
Pale Pink	Navy
Sand	Olive
Stonewashed Blue	Orange
Stonewashed Green	Purple
Violet	Red
Yellow	Royal
Darks	Sangria
Athletic Heather*	Spruce
	Steel Blue

Please Note:

Colors shown are approximate and for reference only. For closest match see PMS colors, or for exact match, returnable samples and grommeted samples are available.

*90/10 Cotton/Polly

**99/1 Cotton/Polly

Color Chart

Colors	Aquatic Blue	Ash	Athletic Heather	Athletic Maroon	Black	Brown	Cardinal	Charcoal
PMS	298C	No Match	No Match	229C	Process Black	7519C	208C	431C
Colors	Colonial Blue	Daffodil Yellow	Dark Green	Gold	Kelly	Light Blue	Lime	Natural
PMS	646C	134C	5535C	137C	340C	543C	367C	No Match
Colors	Navy	Olive	Orange	Orange Sherbet	Pale Pink	Purple	Red	Royal
PMS	296C	No Match	171C	1575C	670C	273C	200C	661C
Colors	Sand	Sangria	Spruce	Steel Blue	Stonewashed Blue	Stonewashed Green	Violet	White
PMS	No Match	227C	No Match	7546C	5414C	414C	7456C	No Match
Colors	Yellow							
PMS	127C							